

State of Wyoming Corner Record

(In compliance with the *CORNER PERPETUATION AND FILING ACT*, Wyoming Statutes, 1997, Section 33-29-140, et seq., and the Rules and Regulations of the Board of Registration for Professional Engineers and Professional Land Surveyors)

Reverse side of this form may be used if more space is needed

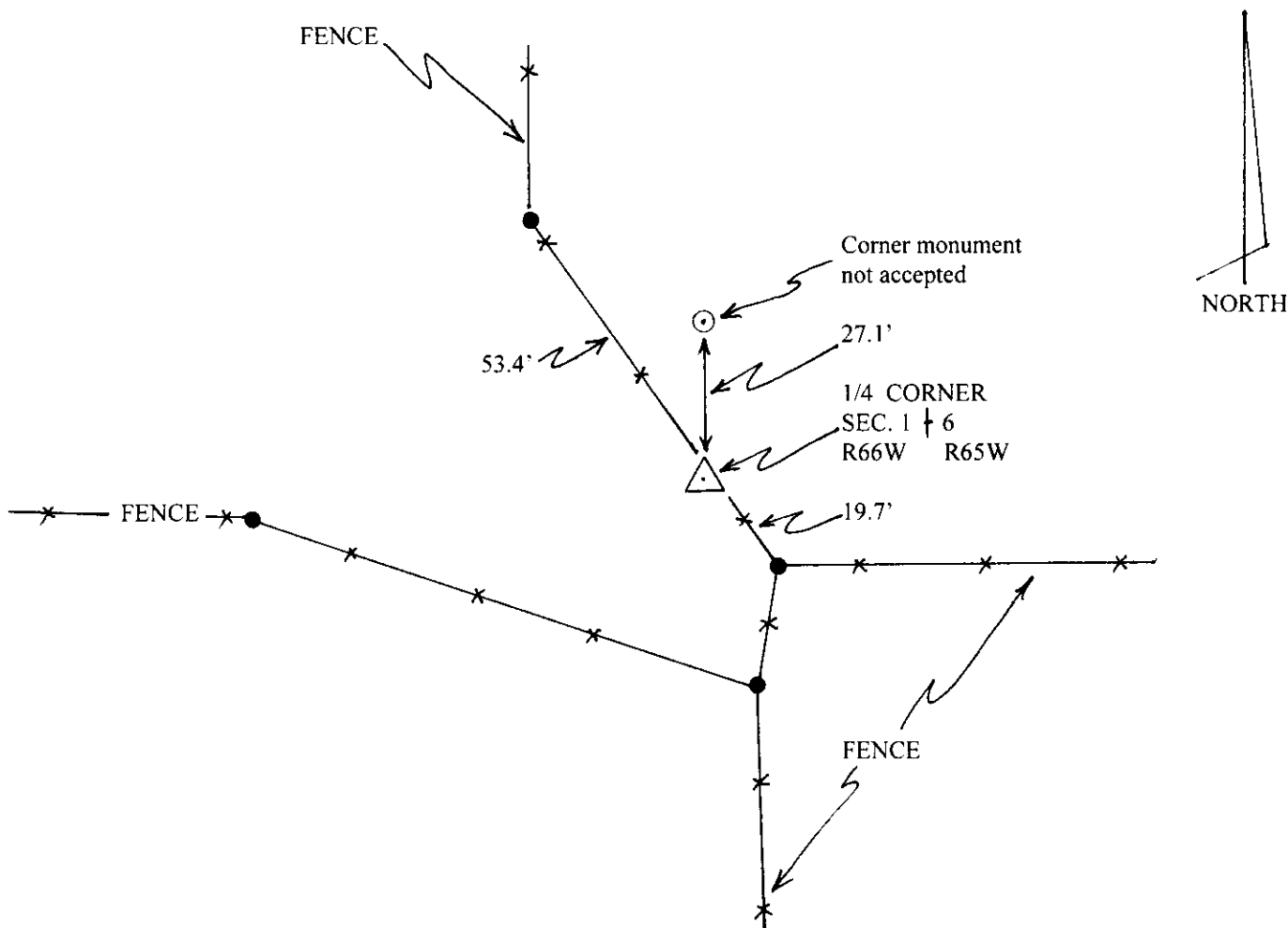
Record of original survey and citation of source of historical information (if corner is lost or obliterated). Description of corner monumentation evidence found and/or monument and accessories established to perpetuate the location of this corner. Sketch of relative location of monument, accessories, and reference points with course and distance to adjacent corner(s) (if determined in this survey). Method and rationale for reestablishment of lost or obliterated corner.

The General Land Office Survey for the township exterior of Township 12 North, Range 65 West, 6th P.M. completed by Wm. Ashley under contract dated June 2, 1867, survey completed 1867, and approved by the Colorado Surveyor General on Jan. 25, 1875; presently recorded in the office of the U.S. Bureau of Land Management, Wyoming.

RECORD: West Quarter Corner for Section 6 (Vol.59 1876, Pg.54): "Set a Boulder stone 12 x 10 x 5 for 1/4 sec. cor."

NOT FOUND: SEE - SURVEYOR'S REPORT on following page.

SET: 3" diameter aluminum survey cap on a 3' long No.5 rebar, properly stamped in accordance with the BLM Manual. See RECORD OF SURVEY recorded in the Laramie County Clerk's Office under Reception No. 616226, Bk. 2338, Pg. 1331.



Date of Field Work: APRIL 2013

Office Reference: _____

CROSS INDEX DIAGRAM

1	2	3	4	5	6	7	8	9	10	11	12	13	14	15	16	17	18	19	20	21	22	23	24	25		
A																									A	
B																									B	
C	6	5	4	3	2	1																			C	
D																										D
E																										E
F																										F
G	7	8	9	10	11	12																				G
H																										H
J																										J
K																										K
L	18	17	16	15	14	13																				L
M																										M
N																										N
O																										O
P	19	20	21	22	23	24																				P
Q																										Q
R																										R
S																										S
T	30	29	28	27	26	25																				T
U																										U
V																										V
W																										W
X	31	32	33	34	35	36																				X
Y																										Y
Z																										Z

Land Surveyor / Firm / Address

John J. Studley, LS No. 4828

Studley Land Surveying, PC

615 West Dale Blvd.

Chevenne, Wyoming 82009

Telephone: **307-287-4755**

This corner record was prepared by me or under my direction and supervision.
SEAL & SIGNATURE



Corner Name: West Quarter Section corner Sections: 6 T 12 N R 65 W ; 6th P.M. Cross-Index No.: C1
SBRPEPLS/PLSW: March 1994: PLSW January 1998



RECORDED 5/24/2013 AT 2:01 PM REC# 616228 JK# 2338 PG# 1333
DEBRA K. LATFROP, CLERK OF LARAMIE COUNTY, WY PAGE 1 OF 2

SURVEYOR'S REPORT

THE ORIGINAL WEST ONE QUARTER CORNER STONE OF SECTION 6, TOWNSHIP 12 NORTH, RANGE 65 WEST, 6TH P.M. WAS NOT FOUND. IN THIS AREA WE HAVE FOUR FENCES CONVERGING FROM EACH OF THE CARDINAL DIRECTIONS, NONE OF WHICH LINES UP WITH THE OTHERS. A 3" DIA. ALUMINUM CAP SET BY L.S. NO. 3047 WAS FOUND LOCATED SOME 35' NORTH OF THESE FENCE JUNCTURES. I DID NOT ACCEPT THIS REESTABLISHED CORNER POSITION FOR THIS SURVEY. THE REASON FOR NOT ACCEPTING THIS MONUMENT, WAS THAT THE SURVEYOR USED SINGLE PROPORTIONATE MEASUREMENT BETWEEN A FOUND STONE (EXISTENT CORNER) AT THE SECTION CORNER TO THE SOUTH AND THE REESTABLISHED CLOSING CORNER ON THE THIRD STANDARD PARALLEL TO THE NORTH. THE REESTABLISHED CLOSING CORNER ON THE THIRD STANDARD PARALLEL IS NOT AN ORIGINAL STONE AND THUS IS NOT AN "EXISTENT CORNER", WHICH IS WHAT IS REQUIRED FOR USE OF THE SINGLE PROPORTIONATE MEASUREMENT CRITERIA FOR REESTABLISHING LOST CORNERS OF THE PUBLIC LAND SURVEY SYSTEM.

ALSO, WHEN I CHECKED RECORD DISTANCES ALONG THIS TOWNSHIP LINE TO THE SOUTH, I FOUND THAT ONE SECTION LINE (ONE MILE) WAS SLIGHTLY LONG (+8.93') AND ONE WAS SLIGHTLY SHORT (-19.2'). THIS INDICATED TO ME THAT THE RECORD DISTANCES WERE REASONBLY RELIABLE. USING RECORD DISTANCE FROM THE SECTION CORNER STONE TO THE SOUTH, ON LINE WITH THE REESTABLISHED CLOSING CORNER TO THE NORTH, THE REESTABLISHED TEMPORARY POSITION FELL ONLY 6'+/- NORTH OF THE EXISTING FENCE JUNCTURE POSITION, 27' SOUTH OF THE PREVIOUSLY REESTABLISHED CORNER MONUMENT POSITION I DO NOT ACCEPT. THIS INDICATED TO ME THAT THE EXISTING FENCES WERE IN FACT A REASONABLE COLLATERAL EVIDENCE OF THE GENERAL LOCATION OF THE ORIGINAL POSITION OF THE STONE. BECAUSE THE FENCES DID NOT LINE UP WITH ONE ANOTHER, I DETERMINED THAT THE RECORD DISTANCE (NOT THE FENCES) WAS THE BEST AVAILABLE EVIDENCE FOR REESTABLISHING THE ORIGINAL POSITION OF THIS OBLITERATED QUARTER CORNER, IN THE GENERALLY CLOSE PROXIMITY OF THE FENCE JUNCTURES.

ALSO NOTE THAT I HAVE IN FACT CONSULTED WITH THE OTHER PROFESSIONAL LAND SURVEYOR, AND HE HAS INDICATED TO ME THAT HE CONCURS WITH MY FINDINGS AND ARGUMENTS FOR NOT ACCEPTING HIS PREVIOUSLY REESTABLISHED POSITION.

CONCLUSION: Since we do not have two "Existent GLO Corners", the single proportionate measurement procedure cannot be used. Since record distances do appear to be reasonably close, the record GLO measurement of 2640' from the Section Corner to the south, on line with the reestablished Closing Corner to the north provides the best position for reestablishment of this obliterated corner. The close proximity of fence locations is supporting collateral evidence of this reestablished position. In my professional opinion, these measurments and collateral evidence provide good repositioning of the original corner beyond reasonable doubt.

